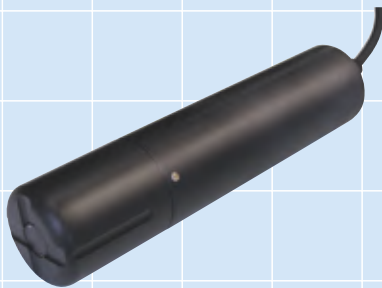


OPTeX New Optical Dissolved Oxygen Sensor

-Easy Installation, Simple Operation-

NEW



Optical Dissolved Oxygen Sensor

Detector: DOS-20

- Combination use with MLSS Analyzer for biological treatment or MBR process
- Robust Design -Inert ABS construction
- Long Term Stability -No Influence by water flow rate

Trasmitter -Outdoor Type-

SC-DO

- Robust Design
- IP65 Water Jet Proof
- Simple Key Operation



Trasmitter -Panel Mount Type-

PM-DO

- 48 x 96mm Panel Mount Type
- IP66 Protection Degree (Front Panel)
- 24 VDC Power Supply (Option)

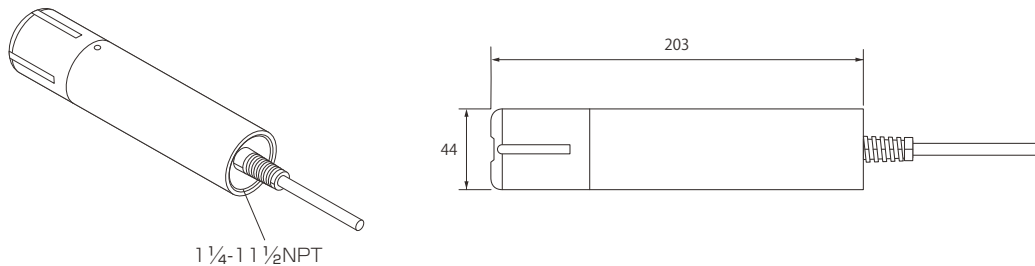
Optical Dissolved Oxygen Sensor

■ Specifications

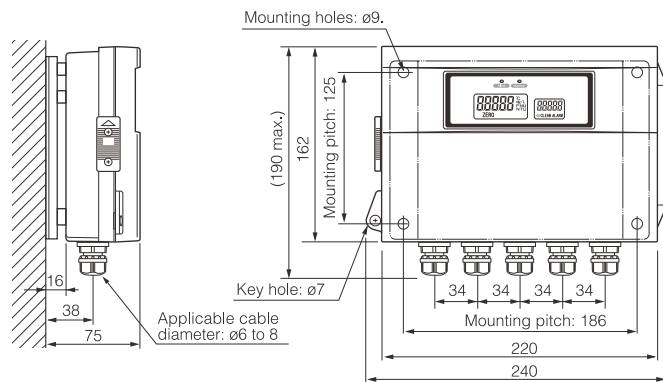
Model	Detector DOS-20 / Transmitter (Outdoor Type) SC-DO		Detector DOS-20 / Transmitter (Panel Mount Type) PM-DO	
Measuring Parameter	Dissolved Oxygen (mg/L)	Temperature (°C)	Dissolved Oxygen Saturation Rate (%)	Oxygen Partial Pressure (kPa)
Measuring Range/ Display Resolution	[Dissolved Oxygen] 0.00 ~20.00mg/L (0.01mg/L) [Temperature] 0.0 ~50.0°C (0.1°C)		[Dissolved Oxygen Saturation Rate] 0.0 ~200.0% (0.1%) [Oxygen Partial Pressure] 0.0 ~150.0kPa (0.1kPa)	
Measurement Accuracy	±0.1mg/L (0~8mg/L) , ±0.2mg/L (8~20mg/L)			
Response Time	90%<45 seconds, 95%<60 seconds (Water temperature : 25°C)			
Sensor Cap Replacement Term	About 3 Years			
Power Supply	AC100-240V 15VA max.		AC100-240 14VA max. *AC/DC 24V (option)	
Signal Output	4-20mA (load resistance 500Ω max.) ×2		4-20mA (load resistance 500Ω max.) ×2 *RS-485(option)	
Relay Output	non-voltage C-contact capacity 240VAC, 2A resistance load		non-voltage C-contact capacity 250VAC, 3A resistance load	
Cleaning Output	Connect to a cleaning device (non-voltage A-contact capacity 240VAC, 2A resistance load)		Connect to a cleaning device	
Calibration	1-Point, 2-Point, Concentration Option, Initialized Calibration			
Correction	[Salinity Concentration Correction] 0~42PSU		[Altitude Correction] 0~5000m	
Measuring water temperature	0 to 50°C			
Ambient Temperature	Transmitter : -20 to 50°C Humidity 95%Rh or less (Avoid direct sunlight)		Transmitter : 0 to 50°C Humidity 35 to 85%Rh (non condensing)	
Material	Detector	ABS		
	Transmitter	Polycarbonate		Fire-retardant resin
Dimensions	Detector	Φ44 x 203mm		
	Transmitter	162(H)×240(W)×75(D)mm		96(H)×48(W)×98.5(D)mm
Weight	Detector	850g (including 10m cable)		
	Transmitter	Approx.1.6kg (including the Mounting Bracket)		Approx. 290g
Degree of protection	Detector	Underwater type, maximum depth of 200m (IP68)		
	Transmitter	Jetproof type (IP65)		IP66 (Front Panel)
Cable Length	10m			
Option	Mounting Attachment (DA-1), Replacement Sensor Cap (DOS-CP)			

■ Dimensions (unit: mm)

Detector DOS-20



Transmitter(Outdoor Type) SC-DO



Transmitter(Panel Mount Type) PM-DO

