

# D-CALC<sub>.be</sub>

## P-30 « CNA » 3.0

Electronic anti-scale device.

### Technical sheet



#### Technical characteristics :

- Treatment capacity in one pass 20m<sup>3</sup>/day.
- Treatment capacity in peak 7m<sup>3</sup>/h.
- In circulation system the D-CALC capacity is up to 30% from the total capacity.
- If the make up water constitutes more than 10% of the volume of the circulated water, an additional unit must be installed on the make up water.

Power supply: 220V/50Hz - 1.2W power supply cable approx. 1.6m with Euro plug.

- ABS case.
- 1 membrane switch for automatic installation.
- 1 digital display: absorption control of the signal.
- 1 control LED: automatic position.
- 1 control LED: adjusted signal.
- Standard pluggable induction wires 2 x 4 m.

- Overall dimensions: 222x146x55mm
- Weight: 1050 g.

The D-CALC generates pulses of specific amplitude and frequency which are transmitted to the water through windings on the piping by capacitive transfer.

The electronic circuit is cast in a special resin which protects it from dust and humidity.

The built-in calculator continuously measures the absorption of the impulses by the water, by the pipes and by the existing scale.

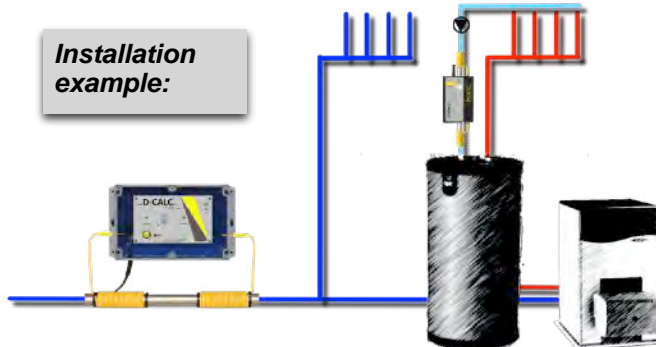
In compliance with European standards of:  
electrical safety EN 60 335-1  
radio anti-disturbance EN 55014

If there is a hot water return circuit allowing the water to be maintained at a constant temperature despite the extent of the circuit, this will be reprocessed on the return before entering the exchanger and the storage, so as to retain its "non-scaling" character. This can be achieved by adding a second device on the loop return after the circulation pump. The D-CALC model will be chosen based on the volume of the storage tank and the hot water consumption.

With a simple glance and without loss of time, you will check its operating condition.



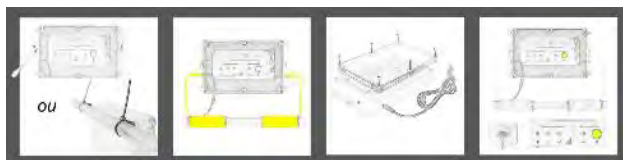
#### Installation example:



Mounting on any pipe (except hose with metal braid connected to earth)



Fixing to the pipe or to the wall, horizontally, inclined or vertically, using the brackets and screws supplied.



א.ב. מולי סחר ושירותים בע"מ  
הנגר 3 ת.ד. 1397 כפר סבא  
טל: 09-7434264  
פקס: 09-7440681  
[www.abmoli.com](http://www.abmoli.com)

**איכות וחדשנות במים**